

# CALETA PALMS

## LIVING IN ETERNAL SPRING

All information straight from promotor: +34-658-905539



CALETAPALMS  
TENERIFE

//

Where time holds no sway over the seasons,  
Where tidings slip by with the tides,  
Where El Teide blocks the savage winds,  
And life thrives under the sun,  
There, in the Spanish waters off of the African coast,  
Lies your island of eternal spring.

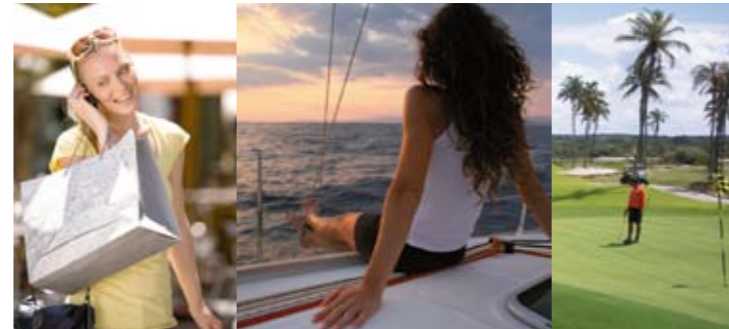
//



# YOUR ISLAND ON AN ISLAND

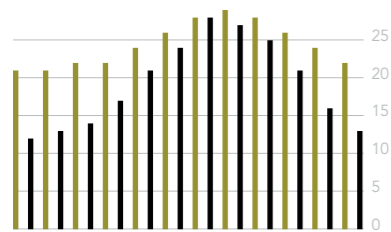
As the largest of the Canary Islands, Tenerife takes its tropical siesta in the wake of the Sahara. Wild rock formations cut diagonally through the island, baring their teeth to the blue sky. At the southwest foot of this mountain range lies a picturesque fishing village, La Caleta. It is here that Caleta Palms Resort forms an oasis of luxury in a sea of nature.

The beach is just a stroll away from Caleta Palms Resort. But don't forget to lose yourself in the tangle of alleys and streets, a true expedition through the Canary Island authenticity of La Caleta. No need to walk far for recreation in style: next door to Caleta Palms Resort is the prestigious Costa Adeje Golf Course. There is also the luxury shopping centre El Duque and the world-famous top sporting complex Tenerife Top Training in this exclusive, fashionable part of Tenerife.



# RICH IN FREEDOM





Annual temperature **Tenerife/Saint Tropez**

At Caleta Palms Resort, your cares will melt away like snow before the sun. All the more since Tenerife enjoys pleasant spring temperatures year round: from 20°C in the winter to 25°C in the summer. This unique climate is due to the warm trade winds and the volcanic origins of the Canary Islands. El Teide is not only the largest volcano on Tenerife, but also the highest mountain on Spanish territory. The volcanic rock gives the island its black lava beaches.



LIKE SNOW  
BEFORE  
THE SUN

Located on one of the most attractive locations on Tenerife, Caleta Palms Resort also demands attractive architecture. The plans were drawn up by the Spanish architect Leonardo Omar, who designed a stylish complex that emanates class and luxury. But with respect for the environment. The phenomenal entrance hall is an undisguised tribute to the carved out cliff face on which Caleta Palms was built. A tower of strength and beauty.



# ARCHITECTURE ON THE ROCKS

Light, space and freshness play a primordial role in the feeling of freedom. Hence the austere architecture in Caleta Palms Resort bulges with immense windows and cool furnishings. The carved out cliff face inspired the architect to give stone materials a prominent place in the complex. Design, in harmony with nature.

cp

THE BEARABLE  
LIGHTNESS  
OF BEING



Upon opening the curtains each morning, the Atlantic horizon reminds you of the luxury of life at Caleta Palms Resort. Its southern orientation lets you enjoy the radiant sun from the break of dawn until evening falls.

To cool off, take a dive in the swimming pool together with other residents of Caleta Palms Resort.

Unless you'd prefer an apartment with a private swimming pool, baby pool or jacuzzi. Relax peacefully in an apartment with a terrace, garden or patio. Or simply enjoy your apartment: no less than one hundred and ten square metres of luxury, style and quality.

Living approaches perfection at Caleta Palms Resort.



# AN APARTMENT APART

## Apartment 1 to 6 and 37

- entrance hall
- dining room/living room
- kitchen
- storeroom
- 2 bathrooms
- 2 bedrooms
- dressing room
- 109,07 m<sup>2</sup>
- terraces and/or swimming pool from 79 m<sup>2</sup>
- total apartment with terrace from 188 m<sup>2</sup>



## Apartment 7 to 19

- entrance hall
- dining room/living room
- kitchen
- storeroom
- 2 bathrooms
- 2 bedrooms
- office space/ 3rd bedroom
- cloakroom/storeroom
- 112,64 m<sup>2</sup>
- terraces and patios from 80 m<sup>2</sup>
- total apartment with terrace and patios from 192,64 m<sup>2</sup>



## Apartment 21 to 26

- entrance hall
- dining room/  
living room
- kitchen
- storeroom
- 2 bathrooms
- 2 bedrooms
- dressing room
- cloakroom/storeroom  
109,07 m<sup>2</sup>
- terraces  
from 56 m<sup>2</sup>
- total apartment with  
terrace and patios  
165,07 m<sup>2</sup>



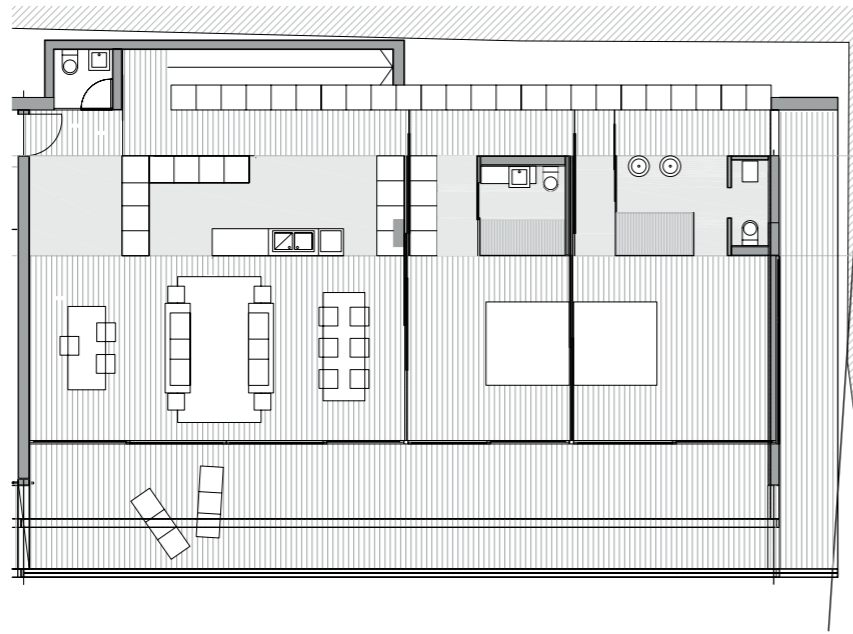
## Apartment 40

- entrance hall
- dining room/living room
- kitchen
- storeroom
- 2 bathrooms
- 2 bedrooms
- office space/  
3rd bedroom  
107,36 m<sup>2</sup>
- terrace  
35,45 m<sup>2</sup>
- total apartment  
with terrace  
from 142,81 m<sup>2</sup>



## Apartment 41

- entrance hall
- dining room/  
living room
- kitchen
- storeroom
- 2 bathrooms
- 2 bedrooms
- office space
- 129,25 m<sup>2</sup>
- terrace
- 35,45 m<sup>2</sup>
- total apartment  
with terrace
- 164,70 m<sup>2</sup>



## Apartment 50

- entrance hall
- dining room/  
living room
- kitchen
- storeroom
- 2 bathrooms
- 3 bedrooms
- dressing room
- 134,46 m<sup>2</sup>
- patio
- 32,32 m<sup>2</sup>
- terraces (swimming  
pool included)
- 166,44 m<sup>2</sup>
- total apartment  
with terrace and patio
- 333,22 m<sup>2</sup>

